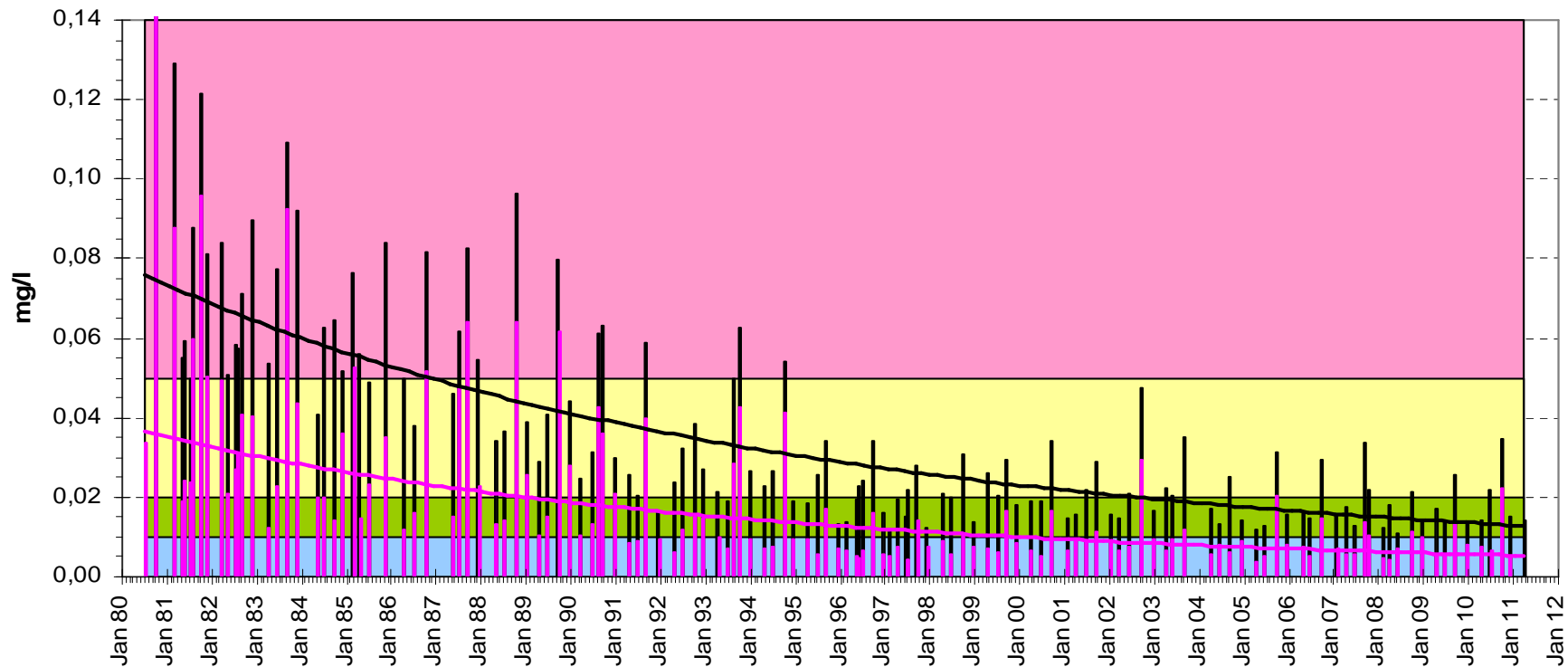


# GRABENSEE

## Mittlerer Phosphorgehalt (mg/l) im Freiwasser Jahresreihe 1980 - 2011

P ges. unfiltr.: 0,18  
P ges. filtr.: 0,17

letzte Untersuchung: 30.3.2011



- |  |  |
|--|--|
| <span style="display: inline-block; width: 15px; height: 10px; background-color: #FFB6C1; border: 1px solid black;"></span> überdüngt (polytroph)                              | <span style="display: inline-block; width: 15px; height: 10px; background-color: #FFFF00; border: 1px solid black;"></span> nährstoffreich (eutroph)                 |
| <span style="display: inline-block; width: 15px; height: 10px; background-color: #9ACD32; border: 1px solid black;"></span> mäßig nährstoffreich (mesotroph)                   | <span style="display: inline-block; width: 15px; height: 10px; background-color: #ADD8E6; border: 1px solid black;"></span> nährstoffarm (oligotroph)                |
| <span style="display: inline-block; width: 15px; height: 10px; background-color: black; border: 1px solid black;"></span> PHOSPHOR GES. (unfiltr.,ber. als P) mg/l - Grabensee | <span style="display: inline-block; width: 15px; height: 10px; background-color: magenta; border: 1px solid black;"></span> PHOSPHOR GES. (filtr.,ber. als P) mg/l - |
| <span style="display: inline-block; width: 15px; border-bottom: 2px solid black; height: 0;"></span> Trend PHOSPHOR GES. (unfiltr.,ber. als P)                                 | <span style="display: inline-block; width: 15px; border-bottom: 2px solid magenta; height: 0;"></span> Trend PHOSPHOR GES. (filtr.,ber. als P)                       |